

IATESTA  
STUDIO



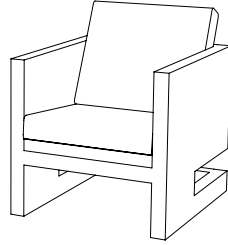
HALPRIN LOUNGE CHAIR

23-1809  
28"W x 31.5"D x 27"H

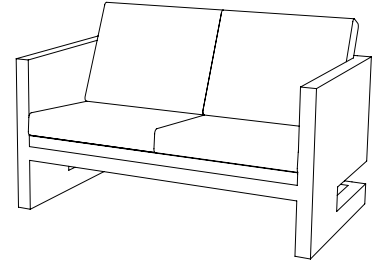
# IATESTA STUDIO

FURNITURE  
LIGHTING  
ACCESSORIES  
TEXTILES

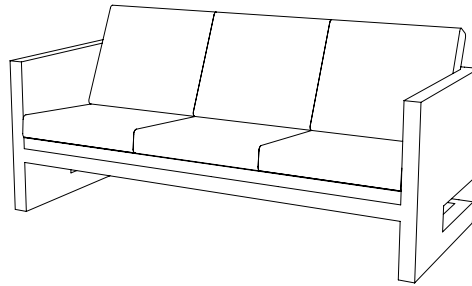
## CUSTOM SUGGESTIONS



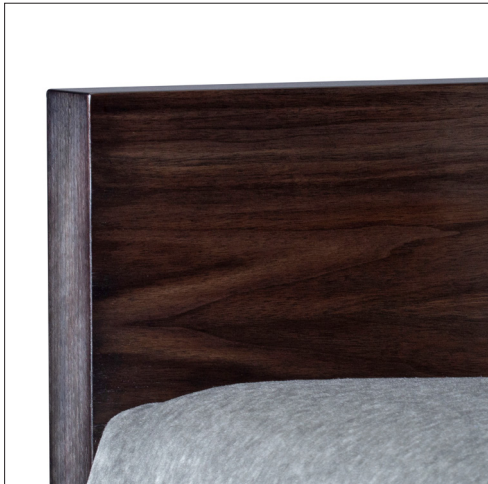
Standard



As a sofa v.1



As a sofa v.2



Hand Made in Maryland  
410.604.0360 (P)  
410.604.0363 (F)  
info@iatestastudio.com  
iatestastudio.com

**NOTE:** Due to variations in printing, the colors shown here cannot absolutely represent true quality and hue. Prior to ordering, please confirm details of this tearsheet and reference finish samples available through your local showroom or sales representative. Line drawings are not drawn to scale.

## HALPRIN LOUNGE CHAIR

Design Staash\Quinn

23-1809

28"W x 31.5"D x 27"H, 36.5"H to top of cushion

AH: 27" / SH: 20" / SD: 19"

Species: Walnut

Finish: W216 / Hematite Walnut

COM 4 yards or COL 72 square feet

Custom finishes available

iatestastudio.com

All content © by Iatesta Studio

